

TOWN HOUSES

2 BEDROOM
2 GARAGE



With architecture inspired by Italy's century old hillside towns and using solid brick construction this beautiful home is built to last.

Point Ridge is a high-quality development set in five hectares of gardens featuring a resort style heated swimming pool and spa, recreation room, gymnasium and BBQ areas. All the grounds and facilities are maintained to an exemplary standard so the only thing you have to worry about is your home.

- › Quality brick construction
- › Open plan living and dining with 2.7m ceilings
- › Designer bathrooms and kitchens with Bosch appliances
- › Generous bedrooms with built in wardrobes
- › Caesarstone kitchen bench top
- › Views over Albany to Auckland City
- › Indoor/outdoor flow onto courtyard area
- › 100% wool carpets
- › Communication system to main gate for visitor access
- › Continuous flow gas water heating system
- › Shopping, schools, restaurants and beaches nearby
- › Stratum in freehold title

SIZE

Total Internal 167m², plus deck and courtyard garden area.

PRICE

See website for details:
www.pointridge.co.nz

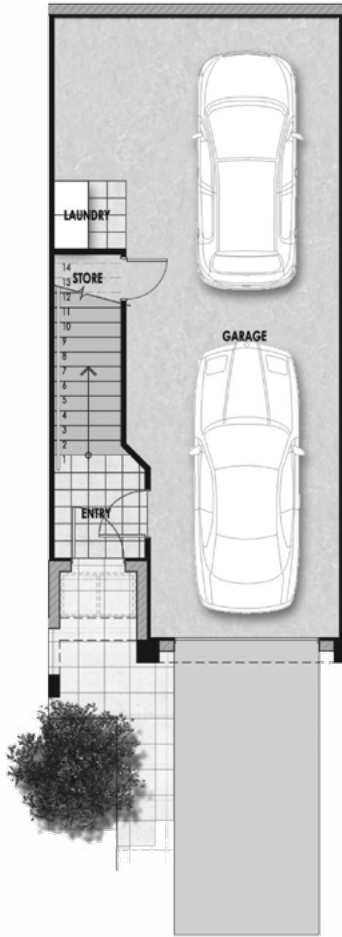

POINT RIDGE
TOWNHOUSES & VILLAS

VIEWING - SHOW HOME HOURS

Open Saturday & Sunday, 1 - 4pm or by appointment

JEN BIRD 0800 774 343 021 618 697
Licensed Agent REAA 2008

GROUND FLOOR



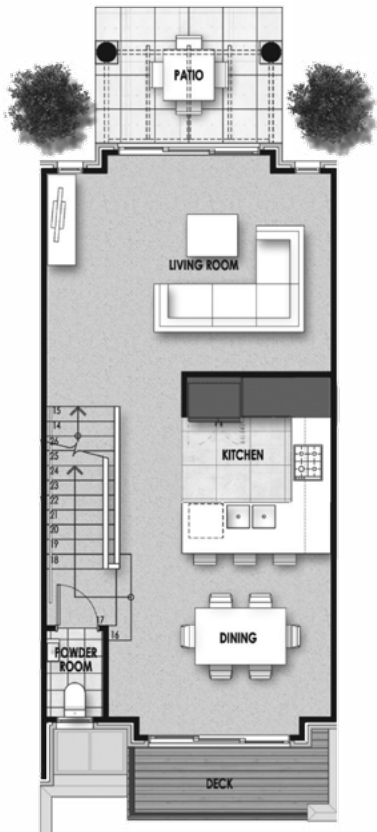
POINT RIDGE

TOWNHOUSES

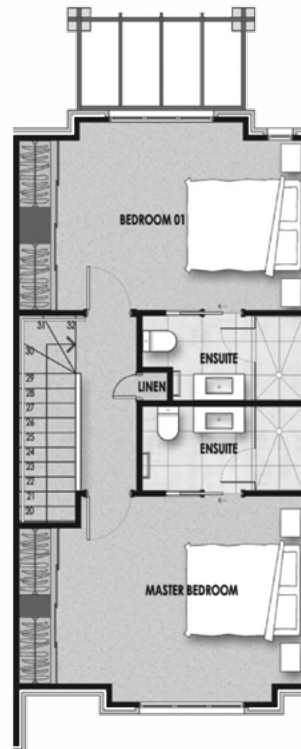
2 BEDROOM 2 GARAGE

FLOOR PLANS

FIRST FLOOR



SECOND FLOOR



The information contained in this document is up to date at the timing of print. Point Ridge Limited reserves the right to change details, materials, sizes and specifications without notice. Intending purchasers should rely on their own enquiries. The contract of sale, and the relationship between Point Ridge Limited and the purchaser, will be the final determinant.

TOWN HOUSES

3 BEDROOM
2 GARAGE



With architecture inspired by Italy's century old hillside towns and using solid brick construction this beautiful home is built to last.

Point Ridge is a high-quality development set in five hectares of gardens featuring a resort style heated swimming pool and spa, recreation room, gymnasium and BBQ areas. All the grounds and facilities are maintained to an exemplary standard so the only thing you have to worry about is your home.

- › Quality brick construction
- › Open plan living and dining with 2.7m ceilings
- › Designer bathrooms and kitchens with Bosch appliances
- › Generous bedrooms with built in wardrobes
- › Caesarstone kitchen bench top
- › Views over Albany to Auckland City
- › Indoor/outdoor flow onto courtyard area
- › 100% wool carpets
- › Communication system to main gate for visitor access
- › Continuous flow gas water heating system
- › Shopping, schools, restaurants and beaches nearby
- › Stratum in freehold title

SIZE

Total Internal 186m², plus deck and courtyard garden area.

PRICE

See website for details:
www.pointridge.co.nz


POINT RIDGE
TOWNHOUSES & VILLAS

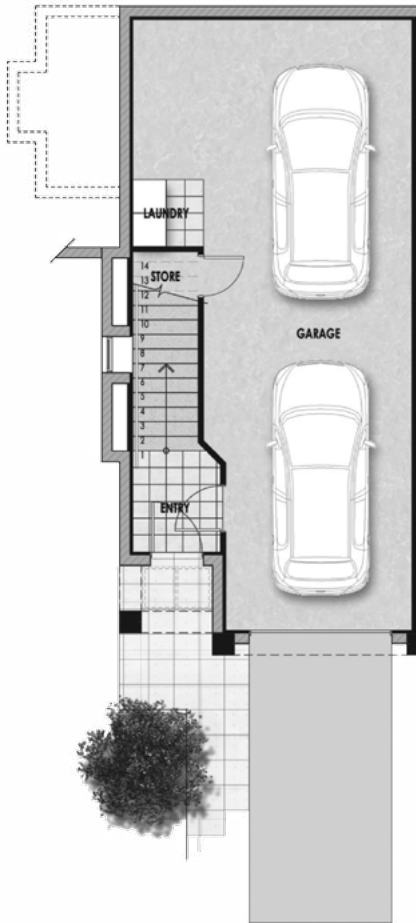
VIEWING - SHOW HOME HOURS

Open Saturday & Sunday, 1 - 4pm or by appointment

JEN BIRD 0800 774 343 021 618 697

Licensed Agent REAA 2008

GROUND FLOOR

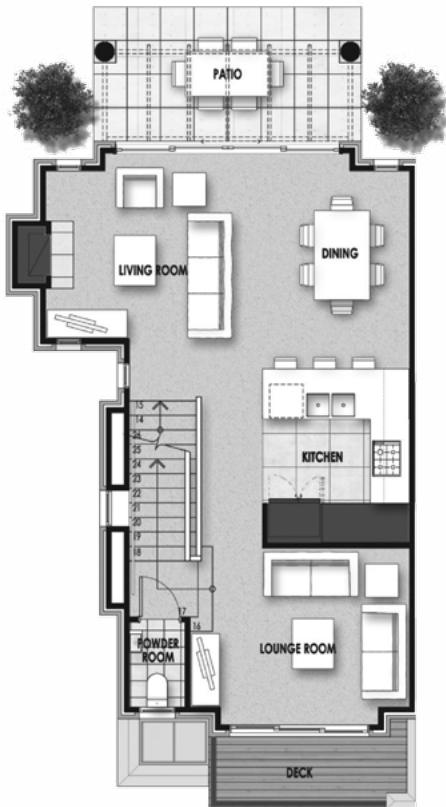


POINT RIDGE TOWNHOUSES

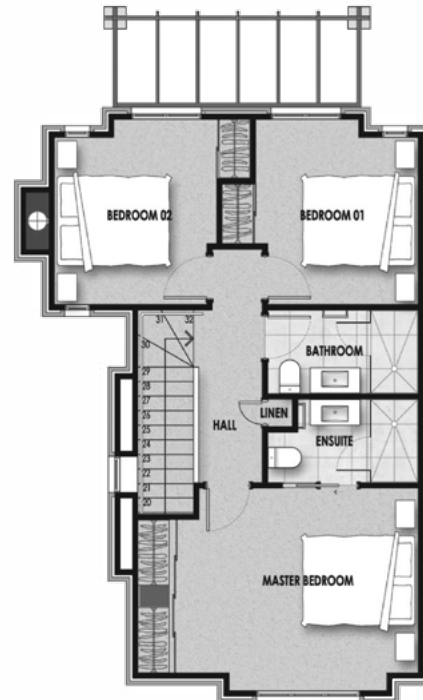
3 BEDROOM 2 GARAGE

FLOOR PLANS

FIRST FLOOR



SECOND FLOOR



The information contained in this document is up to date at the timing of print. Point Ridge Limited reserves the right to change details, materials, sizes and specifications without notice. Intending purchasers should rely on their own enquiries. The contract of sale, and the relationship between Point Ridge Limited and the purchaser, will be the final determinant.

Point Ridge Avenue, off Gills Road, Albany Heights, Auckland | 0800 774 343 | www.pointridge.co.nz